

Executive functioning-related brain abnormalities associated with the genetic liability for schizophrenia: an activation likelihood estimation meta-analysis

V. M. Goghari*

Clinical Neuroscience of Schizophrenia (CNS) Laboratory, Department of Psychology and Psychiatry, University of Calgary, Calgary, AB, Canada

Background. Relatives of schizophrenia patients demonstrate abnormalities in prefrontal cortical activation during executive processing as measured by functional neuroimaging, albeit not consistently. A meta-analysis was conducted to determine whether reliable patterns of brain hypo- and hyperactivity, especially in the middle frontal region, were present in the relatives of patients.

Method. Seventeen studies, containing 18 samples of relatives and controls, were included in this meta-analysis. Studies were included if relatives of schizophrenia patients were compared to controls, an executive processing task was used, and standard space coordinates were reported for the functional activations. Activation likelihood estimation (ALE) was implemented to find convergence across functional neuroimaging experiment coordinates. A separate analysis was conducted to assess the potential impact of *a priori* hypothesis testing used in region-of-interest (ROI) approaches on the meta-analysis results.

Results. Relatives demonstrated hypo- and hyperactivity in statistically overlapping right middle frontal regions [Brodmann area (BA) 9/10]. Use of an ROI analysis that *a priori* focused on prefrontal regions resulted in more findings of reduced activity in the middle frontal region.

Conclusions. The cortical regions identified by this meta-analysis could potentially serve as intermediate biological markers in the search for candidate genes for schizophrenia. As neurocognitive deficits are related to functional impairments in patients, a better understanding of neural and genetic vulnerabilities would be beneficial in our efforts to remediate these important deficits.

Received 25 June 2010; Revised 31 August 2010; Accepted 6 September 2010; First published online 14 October 2010

Key words: Cognition, endophenotype, family study, functional magnetic resonance imaging (fMRI), prefrontal cortex.

Introduction

Schizophrenia is a disorder associated with significant brain dysfunction, with a genetic vulnerability. With recent advances in molecular genetics, the search for susceptibility genes has come to the forefront of schizophrenia research, but findings have been inconsistent (Williams *et al.* 2009). An alternative behavioral genetics approach is to investigate the genetic liability to the disorder by studying biological relatives of schizophrenia patients, who have an increased risk for developing the disorder. For example, biological relatives who share 50% of their genes with patients (parents, siblings, children, fraternal twin) have a 6–17% chance of developing schizophrenia, and

monozygotic twins who share all of their genes with patients have a 48% chance of developing schizophrenia (Gottesman, 1991). A study of relatives can also overcome other potential confounds that are associated with studying genetics in schizophrenia, such as effects of the disease process, antipsychotic medications, and various effects associated with a chronic illness. If reliable intermediate markers of abnormalities were documented in the relatives of patients, these liability markers could potentially decrease the complexity of genetic analyses in the search for candidate genes (Gottesman & Gould, 2003). The aim of this paper was to evaluate quantitatively an area of substantial literature accumulation, functional neuroimaging studies of executive functioning in the relatives of schizophrenia patients, to determine whether brain activations are reliably associated with the genetic liability for the disorder.

Executive functioning encompasses cognitive processes that require top-down control to implement

* Address for correspondence: V. M. Goghari, Ph.D., Department of Psychology, University of Calgary, 2500 University Drive NW, Calgary, AB, Canada T2N 1N4.
(Email: vina.m.goghari@ucalgary.ca)

goal-directed behavior, including attention, working memory, cognitive control, word generation, response selection, and inhibition. Schizophrenia patients demonstrate difficulties in all of the domains of executive functioning (Heinrichs & Zakzanis, 1998). Heinrichs (2005), in his quantitative review, found that cognitive tasks measuring frontal lobe functioning (e.g. Wisconsin Card Sorting task, verbal fluency) have some of the largest effect sizes (effect size=1) in demonstrating deficits among schizophrenia patients compared to other domains such as frontal lobe structural volume (effect size=0.4), making this a promising domain for the search of intermediate markers. Importantly, a meta-analysis of cognitive tasks in relatives of patients suggested that, although the effect sizes of particular executive functioning tasks varied, working memory and cognitive control tasks had some of the largest deficit effect sizes (Snitz *et al.* 2006). This suggests that executive dysfunction could be an important marker of genetic liability for schizophrenia.

Executive functioning has been associated with the functions or integrity of the prefrontal cortex, particularly the dorsolateral prefrontal cortex or middle frontal region. A recent quantitative voxel-based meta-analysis of 41 executive functioning neuroimaging studies found consistent prefrontal activations in the middle frontal, inferior frontal, superior frontal and anterior cingulate regions in healthy subjects (Minzenberg *et al.* 2009). In addition, a wide variety of cortical and subcortical regions were also reliably activated, including the parietal and temporal lobes, thalamus and cerebellum. Schizophrenia patients were also found to activate a similar executive function cortical and subcortical neural network (Minzenberg *et al.* 2009). The meta-analysis contrasted patients with controls directly. Patients demonstrated consistent hypoactivity in their bilateral middle frontal [Brodmann area (BA) 6/8/9], right medial frontal (BA 9), right cingulate (BA 32), bilateral claustrum, right putamen, left thalamus, right inferior parietal (BA 7) and left middle occipital (BA 19) regions (Minzenberg *et al.* 2009). In addition, patients demonstrated consistent hyperactivity in the left superior frontal (BA 6/9), left inferior frontal (BA 46), right medial (BA 10), left precentral (BA 6), left cingulate (BA 32), right insula (BA 13), right superior temporal (BA 41), right amygdala, left inferior parietal (BA 40) and right lingual (BA 18) regions (Minzenberg *et al.* 2009). Although both hypo- and hyperactivity were found to exist in the prefrontal cortex, the activations were confined to different areas. The meta-analysis also demonstrated many regions beyond the prefrontal cortex that were consistently impaired during executive functioning in schizophrenia.

The current executive functioning neuroimaging literature in the relatives of schizophrenia patients suggests both hypo- and hyperactivity in the dorsolateral prefrontal or middle frontal region (Brahmbhatt *et al.* 2006; MacDonald *et al.* 2006; Seidman *et al.* 2006; Delawalla *et al.* 2008). In addition, similar to patient studies, several other cortical and subcortical regions have been found to have abnormal activity in the relatives of patients. A qualitative review of 20 functional neuroimaging studies across executive functioning, language and memory paradigms found that the right dorsal prefrontal region (BA 8/9/10/46) showed hyperactivity in 50% of contrasts and hypoactivity in 31% of contrasts in relatives (MacDonald *et al.* 2009). In general, the review found more regions of hyperactivity in relatives compared to controls, including the right ventral prefrontal (BA 44/45/47) and right parietal (BA 7/39/40) regions.

The aim of this investigation was to determine whether reliable patterns of hypo- and hyperactivity are present in the relatives of schizophrenia patients, using activation likelihood estimation (ALE) meta-analysis. Qualitative reviews provide useful summaries of data, but there are several advantages in conducting an ALE meta-analysis. ALE is a voxel-based method for finding convergence across functional neuroimaging coordinates, thereby not limited by author-assigned anatomical labels. Additionally, ALE is useful for identifying previously unnoticed regions, resolving conflicting views, and generating new hypotheses. This study evaluated whether relatives of patients demonstrated distinct prefrontal regions with hypo- and hyperactivity similar to the ALE meta-analysis of schizophrenia patients (Minzenberg *et al.* 2009) and whether additional cortical and subcortical regions are reliably associated with the genetic liability for schizophrenia. As studies of executive functioning often involve region-of-interest (ROI) analysis methods (largely focusing on prefrontal regions), which may bias towards finding prefrontal cortical abnormalities, we also evaluated how methodological differences affected the results.

Method

Study selection

A PubMed literature search was conducted with the keywords 'functional magnetic resonance' and 'schizophrenia' crossed with 'siblings', 'family study', 'relatives', 'twin', 'high risk' and 'genetic risk' to identify English-language peer-reviewed studies investigating executive processing in relatives of schizophrenia patients (or combined schizophrenia with schizo-affective patients) with a control sample using blood oxygen level-dependent (BOLD)

functional magnetic resonance imaging (fMRI). Studies prior to December 2009 were included. Nineteen studies were identified that used cognitive tasks, which are typically considered to measure executive functioning: attention tasks [degraded and modified continuous performance tests (CPTs)], cognitive control (anti-saccade, Stroop, Stop/Signal, choice reaction task, AX-CPT and derivatives), word generation (verbal fluency), and working memory (n-back, Sternberg, ocular motor delayed response tasks). This was an executive functioning definition and task selection strategy consistent with Minzenberg *et al.*'s (2009) ALE meta-analysis of schizophrenia patients, thereby allowing a better comparison of findings. Of the 19 studies, two did not meet criteria for inclusion: one did not report a direct comparison of relatives and controls (Spaniel *et al.* 2007) and the other did not find significant differences in a direct contrast between relatives and controls (Karlsgodt *et al.* 2007), thus not providing any coordinates to include, which is a requirement for ALE. Seventeen studies with 18 samples (one study had two independent samples of relatives and controls), without excluding for variability in methods or statistical threshold, were included in the meta-analysis as these studies reported significant activations in three-dimensional coordinates in standard stereotactic space. Study details are provided in Table 1 (Keshavan *et al.* 2002; Callicott *et al.* 2003; Thermenos *et al.* 2004; Brahmabhatt *et al.* 2006; MacDonald *et al.* 2006; Raemaekers *et al.* 2006; Seidman *et al.* 2006, 2007; Vink *et al.* 2006; Becker *et al.* 2008; Camchong *et al.* 2008; Delawalla *et al.* 2008; Filbey *et al.* 2008; Meda *et al.* 2008; Costafreda *et al.* 2009; Woodward *et al.* 2009; Sepede *et al.* 2010).

Studies investigating the genetic liability to schizophrenia often use an ROI (e.g. *a priori* hypothesis-based regions, functionally defined regions from previous analyses) or hybrid whole-brain and ROI (e.g. small brain volume corrections or reduced threshold for hypothesized regions compared to voxels elsewhere in the brain) approaches to test *a priori* regional hypotheses. Previous ALE meta-analyses have either included all studies reporting coordinates in standard space (e.g. Achim & Lepage, 2005) or restricted analyses to only whole-brain voxel-wise studies (e.g. Ragland *et al.* 2009). Rather than exclude studies for methodology, this meta-analysis evaluated how methodological differences affected results. Therefore, analyses were conducted including all studies and a subsequent analysis including only whole-brain studies. Finally, exploratory analyses were conducted to evaluate patterns in the cognitive control and working memory areas as there were sufficient studies in these individual domains. As Camchong *et al.* (2008) combined two tasks, a primarily cognitive control task

(anti-saccade) and a primarily working memory task (ocular motor delay), their study was excluded from the individual domain analyses.

ALE meta-analysis

From the studies the following information was coded to input into ALE as separate analyses: (1) task-related activations combined between groups (one study reported activations separately for both groups, all activations were included in that case), (2) activations greater in controls compared to relatives, and (3) activations greater in relatives compared to controls. All contrasts comparing higher-level processes to fixation (e.g. 2-back minus fixation) or lower-level baselines (e.g. 2-back minus 0-back) were included as measures of executive functioning, as is done consistently in other ALE meta-analyses (Table 2 presents the individual contrasts).

ALE was performed in Talairach space using GingerALE 2.0 (Laird *et al.* 2005). ALE models coordinates with a Gaussian function to assess the spatial uncertainty associated with each reported coordinate within a study and analyzes for convergence across studies. Coordinates originally published in MNI space were converted to Talairach space using the Lancaster (icbm2tal) transformation (Lancaster *et al.* 2007). Coordinates were modeled with a three-dimensional Gaussian distribution, and convergence across experiments was assessed quantitatively. Rather than using a prespecified full-width at half-maximum (FWHM) for smoothing, an algorithm was used to model the spatial uncertainty of each focus using an estimation of the intersubject and interlaboratory variability typically observed in neuroimaging experiments. This algorithm limited the meta-analysis to an anatomically constrained space specified by a gray-matter mask, and calculated the above-chance clustering between experiments (i.e. random-effects analysis), rather than between foci (i.e. fixed-effects analysis) (Eickhoff *et al.* 2009). The resultant ALE maps were thresholded using a false discovery rate (FDR)-corrected threshold of $p < 0.05$, with a cluster threshold $> 100 \text{ mm}^3$. A cluster analysis script identified ALE clusters (areas of high activation likelihood) and provided x, y, z coordinates of the weighted center-of-mass and peak locations and an anatomical label assigned by the Talairach Daemon (Lancaster *et al.* 2000).

Results

Executive functioning task-related activations

Five studies reported executive functioning task-related activity combined across relatives and control

Table 1. Characteristics for studies included in the meta-analysis

Study	Task	Controls			Relatives			Analysis
		<i>n</i>	Age (s.d.), years	Gender (M/F)	<i>n</i>	Age (s.d.), years	Gender (M/F)	
Attention								
Filbey <i>et al.</i> 2008	Sustained, selective and dual CPTs	8	41 (18–60)	5/3	6 POCs ^a	53 (49–59)	2/4	Whole-brain
Sepede <i>et al.</i> 2010	Degraded CPT	11	32.0 (5.1)	5/6	11 siblings	34.4 (8.8)	5/6	Whole-brain
Cognitive control								
Becker <i>et al.</i> 2008	Stroop	17	32.7 (7.8)	10/7	17 mixed	33.3 (10.8)	6/11	Whole-brain
Delawalla <i>et al.</i> 2008	AX-CPT	92	20.2 (3.4)	39/53	30 siblings	21.3 (3.5)	14/16	Hybrid
MacDonald <i>et al.</i> 2006	Preparing to overcome prepotency	20	33.4 (8.4)	10/10	21 mixed	33.2 (10.9)	7/14	Whole-brain
Raemaekers <i>et al.</i> 2006	Anti-saccades	16	33.4 (13.6)	8/8	16 siblings	33.9 (11.3)	8/8	ROI and whole-brain
Vink <i>et al.</i> 2006	Stop/Signal variant	15	33 (11.0)	7/8	15 siblings	35 (11.3)	8/7	ROI
Woodward <i>et al.</i> 2009	Response selection choice reaction time	14	32.4 (10.9)	9/5	12 siblings	36.9 (13.3)	5/7	ROI
Word generation								
Costafreda <i>et al.</i> 2009	Letter fluency	48	37.4 (9.8)	25/23	10 twins	28.2 (8.9)	8/2	ROI
Working memory								
Brahmbhatt <i>et al.</i> 2006	Faces and word n-back	72	20.3 (3.5)	34/38	18 siblings	20.7 (4)	7/11	Whole-brain
Callicott <i>et al.</i> 2003 (Sample 1)	Number n-back	18	29.6 (7)	11/7	23 siblings	34.4 (9)	6/17	Whole-brain
Callicott <i>et al.</i> 2003 (Sample 2)	Number n-back	15	27.9 (8)	6/9	25 siblings	36.6 (9)	11/14	Whole-brain
Keshavan <i>et al.</i> 2002	Ocular motor delayed response	4	12.5 (3.5)	2/2	4 offspring	13.3 (2.2)	2/2	Whole-brain
Meda <i>et al.</i> 2008	Visual Sternberg	43	42.5 (20.2)	20/23	23 unspecified	50.8 (17.2)	9/14	ROI and whole-brain ^b
Seidman <i>et al.</i> 2006	Letter n-back	24	18.1 (3.3)	10/14	21 unspecified	19.9 (4.0)	12/9	Hybrid
Seidman <i>et al.</i> 2007	Auditory Q3A-CPT	13	36.9 (8.1)	6/7	12 unspecified	34.8 (8.2)	5/7	Hybrid
Thermenos <i>et al.</i> 2004	Auditory Q3A-CPT	12	32.2 (7.7)	6/6	12 unspecified	35.5 (6.0)	4/8	Hybrid
Cognitive control and working memory								
Camchong <i>et al.</i> 2008	Anti-saccade and ocular motor delayed response	14	39 (12)	–	13 mixed	40 (15)	–	ROI

CPT, Continuous performance test; s.d., standard deviation; M, male; F, female; ROI, region of interest.

^a Sample of relatives were presumed obligate carriers (POCs).

^b No coordinates were reported for the whole-brain analysis, so coordinates used were ROI based.

Table 2. Prefrontal cortical activation patterns in individual studies

Study	Task contrast	Controls > Relatives	Relatives > Controls	Analysis
Attention				
Filbey <i>et al.</i> 2008	Sustained CPT <i>v.</i> Rest Selective CPT <i>v.</i> Rest Dual CPT <i>v.</i> Rest	R Sup R Mid ; R Inf R Mid ; L and R Inf; L and R Med	L Sup 2 L Mid ; L Sup –	Whole-brain
Sepede <i>et al.</i> 2010	Degraded CPT: Correct target <i>v.</i> Correct non-target Correct omission <i>v.</i> Correct non-target	R Med –	– L Inf	Whole-brain
Cognitive control				
Becker <i>et al.</i> 2008	Stroop incongruent trials <i>v.</i> Baseline	L Mid	R Inf	Whole-brain
Delawalla <i>et al.</i> 2008	AX-CPT: Group main effect of task <i>v.</i> Rest group \times delay (long, short) interaction	– 2 R Mid	L, 2 R Mid ; R Inf; R Sup 2 R Mid	Hybrid
MacDonald <i>et al.</i> 2006	Preparing to overcome prepotency: Cognitive control cue <i>v.</i> Automatic cue Cognitive control probe <i>v.</i> Automatic probe	L, 2 R Mid ; R Sup L Inf	L Sup L Mid ; L Sup	Whole-brain
Raemaekers <i>et al.</i> 2006	Anti-saccades <i>v.</i> Baseline	–	–	ROI and whole-brain
Vink <i>et al.</i> 2006	Stop/Signal variant: Stop likelihood over five levels	–	–	ROI
Woodward <i>et al.</i> 2009	Response selection choice <i>v.</i> Rest	–	R Mid	ROI
Costafreda <i>et al.</i> 2009	Letter fluency <i>v.</i> Word repetition	–	R Inf	ROI
Working memory				
Brahmbhatt <i>et al.</i> 2006	n-Back (2-back, fixation) \times Stimuli (faces, word) Faces n-back Word n-back	R Mid –	– R Mid	Whole-brain
Callicott <i>et al.</i> 2003; (Sample 1)	Number n-back <i>v.</i> 0-back	4 L Med	2 R Mid ; L and R Inf; R Med	Whole-brain
Callicott <i>et al.</i> 2003; (Sample 2)	Number n-back <i>v.</i> 0-back	L Med, L Sup	5 R Mid ; L Inf	Whole-brain
Keshavan <i>et al.</i> 2002	Ocular motor delayed response <i>v.</i> visually guided saccade task	L, 2 R Mid	–	Whole-brain
Meda <i>et al.</i> 2008	Visual Sternberg, all loads: Encoding <i>v.</i> Implicit baseline ^a All loads: Recognition <i>v.</i> Implicit baseline ^a	3 R Mid ; L and 2 R Inf R Sup	– –	ROI and whole-brain ^b
Seidman <i>et al.</i> 2006	Letter n-back <i>v.</i> Vigilance task	–	R Mid	Hybrid
Seidman <i>et al.</i> 2007	Auditory Q3A-CPT <i>v.</i> Vigilance task	–	–	Hybrid
Thermenos <i>et al.</i> 2004	Auditory Q3A-CPT <i>v.</i> Vigilance task	–	L Mid	Hybrid
Cognitive control, working memory				
Camchong <i>et al.</i> 2008	Anti-saccade and ocular motor delayed response <i>v.</i> Rest	L, R Mid	–	ROI

[continued overleaf]

Table 2 (cont.)

Study	Task contrast	Controls > Relatives	Relatives > Controls	Analysis
Total number of functional activations from all studies				
Middle frontal total		4 L; 13 R	5 L; 14 R	
Inferior frontal total		3 L; 4 R	3 L; 4 R	
Medial frontal total		1 L; 7 R	1 R	
Superior frontal total		1 L; 3 R	2 L; 1 R	

CPT, Continuous performance test; s.D., standard deviation; L, left; R, right; Mid, middle; Inf, inferior; Med, medial; Sup, superior; ROI, region of interest.

Emphasis is on evaluating middle frontal regions, which are presented in bold.

Number describes the number of functional activations that were present for that region. If there is no number then only one functional activation was present.

^aUnclear from manuscript exactly what the implicit baseline condition was.

^bNo coordinates were reported for the whole-brain analysis, so coordinates used were ROI based.

groups. Robust activations were found in 10 clusters, encompassing the bilateral middle frontal (BA 9/10), bilateral inferior frontal (BA 9/47), anterior cingulate (BA 32), bilateral insula (BA 13), left precentral (BA 6), right inferior parietal (BA 40) and right superior parietal (BA 7) regions (see Fig. 1).

Executive functioning activation differences between groups

All studies

Table 3 and Fig. 2 present the significant functional activations from the 17 studies (18 samples of relatives and controls). Eight clusters were found for the controls greater than relatives contrast and six clusters were found in the relatives greater than controls contrast. In both of the contrasts, two overlapping right middle frontal regions consistently showed hypo- and hyperactivity in relatives. Table 2 provides a qualitative review of prefrontal activation patterns in individual studies and is elaborated on in the discussion to better understand the current results. Additionally, control subjects activated to a greater degree the right inferior frontal, right precentral, left posterior cingulate, left thalamus and right lingual regions compared to relatives. By contrast, relatives activated to a greater degree the right superior frontal, right thalamus, right precentral, left inferior parietal and left precuneus regions compared to controls.

Whole-brain studies

A separate analysis of seven whole-brain studies (eight samples) was conducted to assess the potential impact of *a priori* hypothesis testing used in ROI and hybrid whole-brain/ROI approaches on the meta-analysis results (Table 3, Fig. 2). Eight clusters were found for the controls greater than relatives contrast and four clusters were found for the relatives greater than controls contrast. Many commonalities were found between the two analyses. Notable differences from the all-studies analysis included the finding that the middle frontal regions solely demonstrated hyperactivity in relatives compared to controls, suggesting that inclusion of ROI and hybrid approaches biased towards finding functional activations in the middle frontal region and specifically reduced activation.

Exploratory domain-specific activation differences between groups

Cognitive control

Six studies used tasks categorized as measuring cognitive control (see Table 1). There were no regions

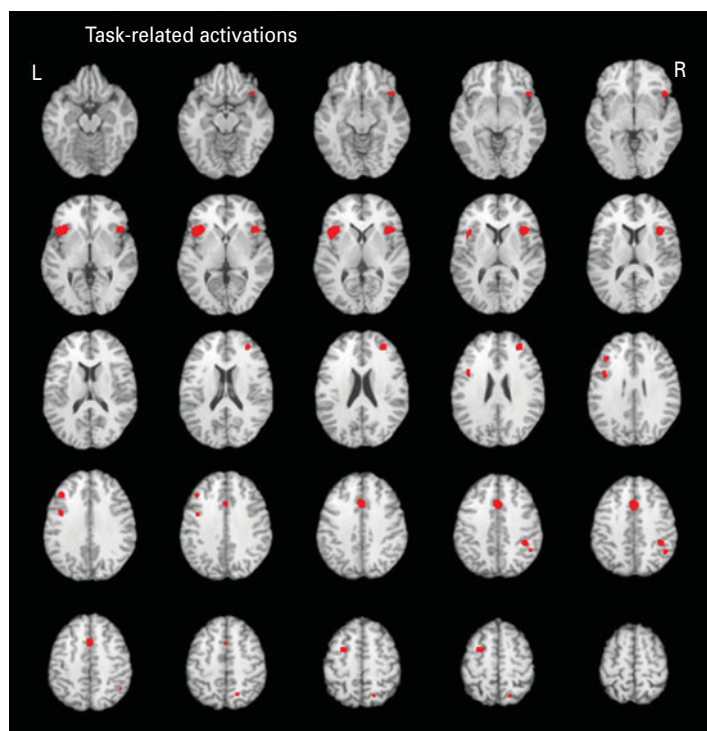


Fig. 1. Above-threshold brain activations associated with executive functioning for both the control and relative groups combined. L, left; R, right.

where controls demonstrated greater activity than relatives. One functional activation encompassing the left middle and superior frontal region was found to have greater activity in relatives compared to controls (see Table 3).

Working memory

Seven studies (eight samples) used tasks categorized as primarily measuring working memory. Studies in the domain of working memory demonstrated mostly consistent activations with the all-studies functional activation map (Table 3 and Fig. 3). One notable difference from the all-studies activation map included the finding that, although both hypo- and hyperactivity were found in relatives, they were not found in overlapping middle frontal regions. This analysis suggests that the working memory studies contributed greatly to the all-studies activation map; however, it was the combination of all studies that led to the finding of hypo- and hyperactivity in the overlapping middle frontal regions.

Discussion

ALE, a voxel-based method for finding convergence across standardized coordinates, was used to assess whether consistent functional activations were present

in 17 executive functioning studies (18 samples of relatives and controls) evaluating the relatives of schizophrenia patients. The aim of this study was to use coordinate-based meta-analytic techniques to investigate conflicting views regarding middle frontal activation in relatives and to identify previously unnoticed regions.

One of the main findings of the ALE meta-analysis was that the relatives of schizophrenia patients demonstrated hypo- and hyperactivity in statistically overlapping right middle frontal regions (BA 9/10). To more fully understand this finding, a qualitative review was conducted to determine how many individual studies reported middle frontal hypo- and hyperactivity (see Table 2). The qualitative review revealed 13 functional activations that demonstrated hypoactivity and 14 functional activations that demonstrated hyperactivity in the right middle frontal region in relatives of patients compared to controls. The qualitative analysis also revealed that the findings of hypo- and hyperactivity in the right middle frontal region were reported in individual studies across both cognitive control and working memory domains and across different task contrasts (e.g. comparison of condition to a lower condition, in addition to rest or fixation baseline). Furthermore, the qualitative analysis revealed that the vast majority of individual studies reported either hypo- or hyperactivity; only two

Table 3. Above-threshold brain activations demonstrating group differences for all executive functioning studies, whole-brain studies, cognitive control studies, and working memory studies

Region	BA	Talairach coordinates			Cluster size ^a (mm ³)
		x	y	z	
All studies					
Control > Relative					
Right middle frontal	10	32	52	10	424
Right middle frontal	9	38	36	34	1008
Right inferior frontal	44/9	52/54	8/8	18/24	192
Right precentral	6	40	-6	42	152
Right precentral	6	50	-4	22	144
Left thalamus	-	-14/-10/-6	-6/-12/-8	10/12/12	304
Left cingulate	31	-16	-26	42	360
Right lingual	18	10	-78	-2	216
Relative > Control					
Right middle frontal	10	32	50	10	376
Right superior frontal	9	40	36	32	400
Right middle frontal/precentral	9	46/46/34	16/24/12	16/24/12	792
Right thalamus	-	4	-10	10	344
Left inferior parietal	7/40	-40/-40	-64/-60	46/44	192
Left precuneus	7	-2	-80	44	368
Whole-brain studies					
Control > Relative					
Left medial frontal	10	-12	64	-2	136
Right middle frontal	8	36	28	42	120
Right precentral	6	50	-4	22	200
Right precentral	6	40	-6	42	200
Left superior temporal	21/22	-62/-58	-12/-4	-4/-2	176
Left thalamus	-	-10/-14/-6	-12/-6/-8	12/10/12	368
Right parietal	7	24	-48	42	144
Left cerebellum	-	-8/-14	-42/-40	-32/-38	168
Relative > Control					
Right middle frontal	10	32	50	10	480
Right middle frontal/precentral	9	48/46	16/24	32/36	176
Left inferior parietal	7/40	-40/-40	-64/-60	46/44	264
Left precuneus	7	-2	-80	44	384
Cognitive control					
Relative > Control					
Left middle/superior frontal	10	-28/-26	48/50	20/12	168
Working memory					
Control > Relative					
Right middle frontal	9	38	36	34	1008
Right inferior frontal	44/9	52/54	8/8	18/24	176
Right precentral	6	40	-6	42	168
Left thalamus	-	-14/-6/-10	-6/-8/-12	10/12/12	312
Left cingulate	31	-16	-26	42	200
Relative > Control					
Right middle frontal	10	32	50	10	480
Right middle frontal/precentral	9	48/46	16/24	32/36	176
Right thalamus	-	4	-10	10	408
Left inferior parietal	7/40	-40/-40	-64/-60	46/44	264
Left precuneus	7	-2	-80	46	368

BA, Brodmann area.

^a Cluster size is the number of contiguous voxels.

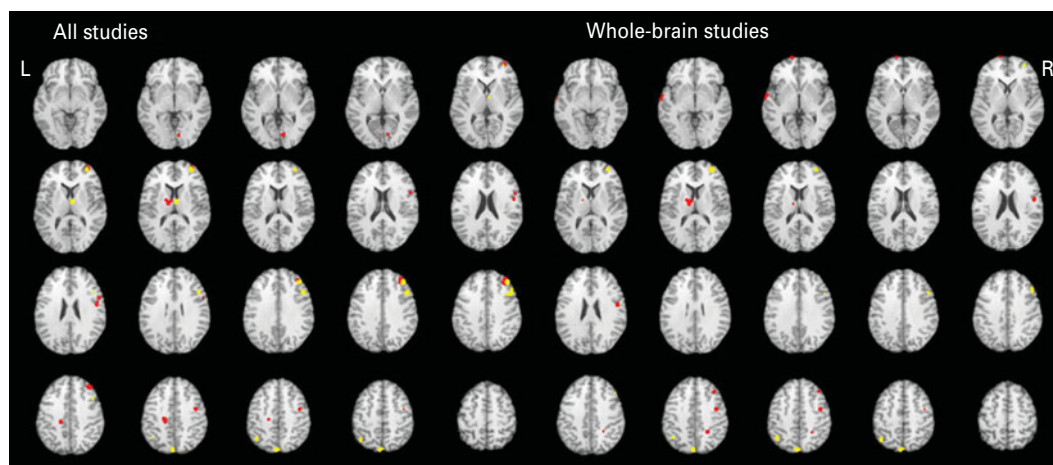


Fig. 2. Above-threshold brain activations for contrasts of controls greater than relatives (red) and relatives greater than controls (yellow) for all executive functioning studies combined and whole-brain studies only. L, left; R, right.



Fig. 3. Above-threshold brain activations for contrasts of controls greater than relatives (red) and relatives greater than controls (yellow) for working memory studies. L, left; R, right.

studies reported both hypo- and hyperactivity in the right middle frontal region. This meta-analysis expands the qualitative summary by quantitatively reporting that the abnormal activity of the middle frontal region detailed by individual studies was not in distinct areas, but rather was localized to statistically overlapping areas. Therefore, this finding suggests that there is a region of the middle frontal area that functions differently in the relatives of patients, resulting in patterns of either hypo- or hyperactivity.

As mentioned earlier, two individual studies reported both hypo- and hyperactivity in relatives of patients and might indicate under which conditions

hypo- versus hyperactivity might emerge. The first study, by Brahmhatt *et al.* (2006), demonstrated that, in the right middle frontal region (BA 10/46), siblings had less activity than controls during a faces working memory task and greater activity during a words working memory task. The second study, by Delawalla *et al.* (2008), found that, in the same middle frontal regions (BA 9/10), siblings demonstrated less activity compared to controls during the longer maintenance task condition and greater activity during the shorter maintenance task condition. Taken together with the results of the ALE meta-analysis, the findings from these two studies suggest that the

genetic liability to schizophrenia may predispose to middle frontal (or dorsolateral prefrontal) dysfunction; however, whether hypo- or hyperactivity is present may depend on the specific task requirements.

To more adequately address the question of under which conditions hypo- and hyperactivity are present in the middle frontal region in relatives of schizophrenia patients, future research studies should consider investigating multiple parts of a trial, as the resultant net activity from block designs (a commonly used strategy in the studies reviewed) could be due to a mixture of cognitive processes required at different points in each trial (e.g. preparatory-, maintenance- or response-related activity) with distinct activation patterns. For example, different forms of control may be present at different parts of a trial, with proactive control occurring earlier and reactive control occurring later in a trial, thereby manifesting different cortical recruitment (Braver *et al.* 2007). Indeed, MacDonald *et al.* (2006) demonstrated that relatives showed different patterns of middle frontal activity during different parts of a trial; hypoactivity was found during encoding in the right middle frontal region (BA 6/8/9) in relatives, whereas hyperactivity was found during responding in their left middle frontal activity (BA 9). Furthermore, including parametric manipulation of conditions over several levels (e.g. delay period), varying the stimuli type (face, words, objects, spatial patterns) or investigating specific aspects of a process (e.g. patterns of activity for maintenance *versus* manipulation for working memory) would help to determine how task parameters influence prefrontal activation in a systematic way. As the majority of the studies reviewed compared the task condition of interest to rest/fixation as opposed to a lower-level task condition that controlled for basic perception, on-task behavior or motivation, the individual study findings could be a product of processes in addition to executive functioning, thereby leading to conflicting results. It would also be useful to investigate middle frontal activity using a broader variety of tasks, such as theory of mind, emotion discrimination or language processing, to allow for a more full understanding of middle frontal activation across different cognitive and affective demands. Finally, a better understanding of heterogeneity among relatives (e.g. high functioning *versus* lower functioning, presence *versus* absence of affective symptoms, presence *versus* absence of Axis II Cluster A pathology) and heterogeneity in their probands (e.g. age of onset, lifetime symptoms) would allow a further clarification of factors that may lead to variability in middle frontal activation.

The finding of hypo- and hyperactivity in overlapping middle frontal regions in this meta-analysis of the

relatives of patient is different from the ALE meta-analysis of executive processing functional neuroimaging studies in schizophrenia patients. Minzenberg *et al.*'s (2009) meta-analysis demonstrated that schizophrenia patients also had both hypo- and hyperactivity, albeit in different prefrontal regions. Patients demonstrated hypoactivity in their middle frontal regions but hyperactivity in their superior and inferior frontal regions. However, in individual studies both hypo- and hyperactivity have been found in patients in the middle frontal region. Manoach (2003) suggested that whether or not hypo- or hyperfrontality was present depended on several variables, including methodological issues, patient heterogeneity and task requirements. Potential reasons why the meta-analyses of functional activations in patients and relatives differed could be the influence of disease process, antipsychotic medication, and other effects of having a chronic illness in patients or compensatory mechanisms in relatives of patients. A potential methodological reason could be that the current meta-analysis included both ROI methodology studies and whole-brain studies. However, instead of excluding ROI-based studies, this meta-analysis evaluated their influence on the results. Future studies (and ultimately meta-analyses) that include studies that investigate all three groups (schizophrenia patients, relatives and controls) will be the most useful in determining how abnormalities are related in the different samples.

One objective of this meta-analysis was to assess the impact of using an ROI methodology on resultant functional activations. Although the pattern of results was mostly similar, one notable difference was that the middle frontal regions that demonstrated both hypo- and hyperactivity when all studies were included demonstrated solely hyperactivity when only whole-brain studies were included. This suggests that using ROIs that *a priori* focus on prefrontal regions might bias towards finding reduced activity in the middle frontal region. However, this finding should be interpreted with caution because of the reduced number of studies in this analysis. Although ROI analyses can overlook some regions and favor others, the ROI methodology has several strengths, including being useful for hypothesis-based testing, replications, and statistical power. To reconcile benefits with costs, future studies may consider conducting and reporting both ROI and whole-brain voxel-wise analyses.

The current investigation identified many regions, in addition to the middle frontal region, that consistently demonstrated hypo- or hyperactivity in relatives of patients during executive functioning. Controls activated to a greater degree the right inferior frontal, right precentral, left posterior cingulate, left thalamus and right lingual regions compared to relatives. By

contrast, relatives activated to a greater degree the right superior frontal, right thalamus, right precentral, left inferior parietal and left precuneus regions compared to controls. These regions may now serve as *a priori* regions for future studies and genetic analyses.

The current study revealed many regions where dysfunction was lateralized to one side of the brain. Although the reason for lateralized deficits in schizophrenia is unknown, many meta-analyses of schizophrenia patients have also revealed numerous gray-matter regions with lateralized patterns of abnormalities both functionally (Minzenberg *et al.* 2009) and structurally (Glahn *et al.* 2008).

Design and analysis strategies

The quality of a meta-analysis depends on the design and analysis strategies used by the individual studies. A recent qualitative review paper of neuroimaging studies in relatives of schizophrenia patients provides comprehensive future directions for designing better neuroimaging family studies (MacDonald *et al.* 2009). In brief, the suggestions included applying symmetrical inclusion and exclusion criteria to controls and relatives, so that differences can be better attributed to the genetic liability for the disorder; measuring behavioral responses during imaging to relate to neural activity; using both ROI and voxel-wise exploratory analytic techniques; presenting all relevant statistics, including effect sizes and risk of false negatives; reporting the whole network that is involved in a task, in addition to between-group differences; exploring heterogeneity in relatives (e.g. schizotypal or not) and their relationship to their probands (i.e. sibling, parent, offspring have different environmental risks); and estimating the stability, heritability and co-segregation of putative brain endophenotypes.

Additional suggestions in designing family studies depend on the nature of the question being addressed. If investigators are specifically interested in documenting the unexpressed genetic liability to the disorder, then it is more useful to study the adult relatives of schizophrenia patients who have passed the typical developmental window for developing psychosis. Alternatively, studying younger relatives not yet through the developmental window for developing psychosis allows for determination of processes probably related to conversion to psychosis, in addition to abnormalities related to genetic vulnerability of the disorder, but not *per se* subsequent development of the disorder. This latter strategy allows an investigation of individuals who ultimately progress to the disorder compared to those who do not. If sample sizes are small to moderate, it may be better to focus on one of these groups (older or younger relatives).

However, if the sample size is sufficiently large, it may be worthwhile recruiting both groups and performing a subgroup analysis to compare the two groups.

Another consideration in recruiting for family studies is whether to restrict the relative sample by their biological relationship to the patient. Although parents, siblings and offspring all have an increased risk for developing schizophrenia, choosing one specific type of relative group can reduce the heterogeneity that can result by combining different relative groups in potential genetics contributions (e.g. parents may be more biologically 'fit' than other relatives as they were able to mate and reproduce), biological environmental factors (offspring and twins are more likely to suffer perinatal complications than other relative groups) and psychosocial environmental factors (growing up with an ill parent *versus* recent onset of a sibling's illness) (MacDonald *et al.* 2009). Studying siblings may have an additional benefit in ensuring a more similar age distribution when schizophrenia patients are included as an additional group. Investigating monozygotic twins, a specific group of siblings, has additional benefits including a larger genetic risk; however, they are more difficult to recruit.

An additional consideration in recruiting for family studies is whether to include relatives who are affected. If a researcher is concerned with investigating the unexpressed genetic liability to the disorder, then it is probably better to restrict the sample to individuals without a psychotic disorder or Cluster A personality disorder (schizoid, paranoid, schizotypy) to reduce the influence of symptoms on behavior and brain functioning. In terms of accepting affected relatives for current or previous mood, anxiety, substance or alcohol abuse/dependence disorders, perhaps the most important consideration is to have the same recruitment criteria for relatives and controls and to measure general psychiatric functioning (e.g. using the Brief Psychiatric Rating Scale). Obtaining relative and control groups that are similarly matched for psychiatric disorders and psychiatric functioning helps in interpreting any differences in brain functioning as being more likely to be attributable to the genetic liability for the disorder.

Finally, to ensure adequate power, sample size considerations are necessary. Optimal sample size determination depends on the type of fMRI experimental design (e.g. block design *versus* event-related; block designs generally have greater power), the part of the brain targeted (in structural MRI, the temporal lobe tends to have larger effect sizes; Boos *et al.* 2007), the type of relative sample (older relatives tend to have smaller effect sizes in cognitive tasks; Faraone *et al.* 1996), and also the MRI scanner and scan

parameters. One of the common recommendations for all published fMRI studies is to provide effect sizes that can then be used to determine power and sample size considerations for similar experiments in the future.

Recent reviews also provide guidelines on improving analyses and reporting standards for neuroimaging experiments (Poldrack *et al.* 2008) and specifically for neuroimaging experiments of clinical populations (Carter *et al.* 2008). In brief, these reviews suggest detailing all relevant participant characteristics, task presentation, neuroimaging sequences, power considerations, quality control procedures, using multivariate techniques along with generalized linear modeling, and documenting the strategy implemented to deal with multiple comparisons. In addition, Poldrack *et al.* (2008) provide a template document in which investigators can fill in specific study details and attach it as an appendix to their papers. Inclusion of such information could then be entered into meta-analyses to allow a better understanding of how sample, task, design and analysis variables affect the overall findings.

Limitations

The sample size of this study (17 studies, 18 samples) was modest, but powered adequately to find reliable functional activations. ALE meta-analyses have been conducted successfully with these sample sizes (Ragland *et al.* 2009) and with smaller sample sizes (Glahn *et al.* 2005). The sample sizes for the exploratory analyses of the individual tasks were small, and therefore the results should be interpreted with caution. However, ALE depends on the consistency of activation in the individual studies, rather than solely the number of studies inputted. For example, the executive functioning task-related activations derived from seven studies revealed robust activations. Therefore, the more reliable map for working memory studies compared to cognitive control studies suggests that the former domain tended to have more homogeneous activations. Although there are strengths associated with the ALE model, there are also limitations. ALE currently does not weight studies by sample size or differences in methods across studies (e.g. statistical thresholds). Lastly, this meta-analysis would have benefited from being able to investigate the effect of specific sample variables (e.g. type of relative, age) and task-related variables on functional activations, but the current sample size impeded doing this.

Conclusions

The current study provides valuable information to researchers conducting neuroimaging and genetic

studies in terms of brain areas that can be tested in future studies, and also to necessary questions that future research could attempt to resolve. This meta-analysis of executive functioning studies found that the middle frontal regions, and other cortical and subcortical regions, were reliably activated across studies investigating the genetic liability to schizophrenia. Dopaminergic and glutamatergic neurotransmitter systems and related genes (e.g. *COMT*, *GRM3*, *AKT1*) have been implicated in prefrontal functioning in both the normal population and schizophrenia (Harrison & Weinberger, 2005; Tan *et al.* 2009). The regions identified by this meta-analysis could serve as biological markers in the search for candidate genes. Importantly, as neurocognitive deficits are related to functional impairments in patients (Green, 1996; Green *et al.* 2000), a better understanding of neural and genetic vulnerabilities could be beneficial in our efforts to remediate these deficits with either psychopharmacology or cognitive remediation. All of the studies included in this meta-analysis were published within the past 10 years, reflecting that this is a rapidly advancing area of investigation. As newer family imaging studies implement the suggestions reviewed here, functional neuroimaging is set to become a powerful strategy to detail the impact of genetics on the neuropathophysiology of schizophrenia.

Acknowledgments

This work was supported by the University of Calgary Start-up Grant. A. Laird is thanked for her help with the implementation of the meta-analysis software.

Declaration of Interest

None.

References

- Achim AM, Lepage M (2005). Episodic memory-related activation in schizophrenia: meta-analysis. *British Journal of Psychiatry* **187**, 500–509.
- Becker TM, Kerns JG, MacDonald 3rd AW, Carter CS (2008). Prefrontal dysfunction in first-degree relatives of schizophrenia patients during a Stroop task. *Neuropsychopharmacology* **33**, 2619–2625.
- Boos HB, Aleman A, Cahn W, Pol HH, Kahn RS (2007). Brain volumes in relatives of patients with schizophrenia: a meta-analysis. *Archives of General Psychiatry* **64**, 297–304.
- Brahmbhatt SB, Haut K, Csernansky JG, Barch DM (2006). Neural correlates of verbal and nonverbal working memory deficits in individuals with schizophrenia and their high-risk siblings. *Schizophrenia Research* **87**, 191–204.
- Braver TS, Gray JR, Burgess GC (2007). Explaining the many varieties of working memory variation: dual mechanisms

- of cognitive control. In *Variation in Working Memory* (ed. A. R. A. Conway, C. Jarrold, M. J. Kane, A. Miyake and J. N. Towse), pp. 76–106. Oxford University Press: New York, NY.
- Callicott JH, Egan MF, Mattay VS, Bertolino A, Bone AD, Verchinski B, Weinberger DR** (2003). Abnormal fMRI response of the dorsolateral prefrontal cortex in cognitively intact siblings of patients with schizophrenia. *American Journal of Psychiatry* **160**, 709–719.
- Camchong J, Dyckman KA, Austin BP, Clementz BA, McDowell JE** (2008). Common neural circuitry supporting volitional saccades and its disruption in schizophrenia patients and relatives. *Biological Psychiatry* **64**, 1042–1050.
- Carter CS, Hecker S, Nichols T, Pine DS, Strother S** (2008). Optimizing the design and analysis of clinical functional magnetic resonance imaging research studies. *Biological Psychiatry* **64**, 842–849.
- Costafreda SG, Fu CHY, Picchioni M, Kane F, McDonald C, Prata DP, Kalidindi S, Walshe M, Curtis V, Bramon E, Kravariti E, Marshall N, Touloupoulou T, Barker GJ, David AS, Brammer MJ, Murray RM, McGuire PK** (2009). Increased inferior frontal activation during word generation: a marker of genetic risk for schizophrenia but not bipolar disorder? *Human Brain Mapping* **30**, 3287–3298.
- Delawalla Z, Csernansky JG, Barch DM** (2008). Prefrontal cortex function in nonpsychotic siblings of individuals with schizophrenia. *Biological Psychiatry* **63**, 490–497.
- Eickhoff SB, Laird AR, Grefkes C, Wang LE, Zilles K, Fox PT** (2009). Coordinate-based activation likelihood estimation meta-analysis of neuroimaging data: a random-effects approach based on empirical estimates of spatial uncertainty. *Human Brain Mapping* **30**, 2907–2926.
- Faraone SV, Seidman LJ, Kremen WS, Toomey R, Lyons MJ, Tsuang MT** (1996). Neuropsychological functioning among the elderly nonpsychotic relatives of schizophrenic patients. *Schizophrenia Research* **21**, 27–31.
- Filbey FM, Russell T, Morris RG, Murray RM, McDonald C** (2008). Functional magnetic resonance imaging (fMRI) of attention processes in presumed obligate carriers of schizophrenia: preliminary findings. *Annals of General Psychiatry* **7**, 18.
- Glahn DC, Laird AR, Ellison-Wright I, Thelen SM, Robinson JL, Lancaster JL, Bullmore E, Fox PT** (2008). Meta-analysis of gray matter anomalies in schizophrenia: application of anatomic likelihood estimation and network analysis. *Biological Psychiatry* **64**, 774–781.
- Glahn DC, Ragland JD, Abramoff A, Barrett J, Laird AR, Bearden CE, Velligan DI** (2005). Beyond hypofrontality: a quantitative meta-analysis of functional neuroimaging studies of working memory in schizophrenia. *Human Brain Mapping* **25**, 60–69.
- Gottesman II** (1991). *Schizophrenia Genesis: The Origins of Madness*. Freeman: New York.
- Gottesman II, Gould TD** (2003). The endophenotype concept in psychiatry: etymology and strategic intentions. *American Journal of Psychiatry* **160**, 636–645.
- Green MF** (1996). What are the functional consequences of neurocognitive deficits in schizophrenia? *American Journal of Psychiatry* **153**, 321–330.
- Green MF, Kern RS, Braff DL, Mintz J** (2000). Neurocognitive deficits and functional outcome in schizophrenia: are we measuring the 'right stuff'? *Schizophrenia Bulletin* **26**, 119–136.
- Harrison PJ, Weinberger DR** (2005). Schizophrenia genes, gene expression, and neuropathology: on the matter of their convergence. *Molecular Psychiatry* **10**, 40–68.
- Heinrichs RW** (2005). The primacy of cognition in schizophrenia. *American Psychologist* **60**, 229–242.
- Heinrichs RW, Zakzanis KK** (1998). Neurocognitive deficit in schizophrenia: a quantitative review of the evidence. *Neuropsychology* **12**, 426–445.
- Karlsgodt KH, Glahn DC, van Erp TG, Therman S, Huttunen M, Manninen M, Kaprio J, Cohen MS, Lonnqvist J, Cannon TD** (2007). The relationship between performance and fMRI signal during working memory in patients with schizophrenia, unaffected co-twins, and control subjects. *Schizophrenia Research* **89**, 191–197.
- Keshavan MS, Diwadkar VA, Spencer SM, Harenski KA, Luna B, Sweeney JA** (2002). A preliminary functional magnetic resonance imaging study in offspring of schizophrenic parents. *Progress in Neuro-Psychopharmacology and Biological Psychiatry* **26**, 1143–1149.
- Laird AR, Fox PM, Price CJ, Glahn DC, Uecker AM, Lancaster JL, Turkeltaub PE, Kochunov P, Fox PT** (2005). ALE meta-analysis: controlling the false discovery rate and performing statistical contrasts. *Human Brain Mapping* **25**, 155–164.
- Lancaster JL, Tordesillas-Gutierrez D, Martinez M, Salinas F, Evans A, Zilles K, Mazziotta JC, Fox PT** (2007). Bias between MNI and Talairach coordinates analyzed using the ICBM-152 brain template. *Human Brain Mapping* **28**, 1194–1205.
- Lancaster JL, Woldorff MG, Parsons LM, Liotti M, Freitas CS, Rainey L, Kochunov PV, Nickerson D, Mikiten SA, Fox PT** (2000). Automated Talairach atlas labels for functional brain mapping. *Human Brain Mapping* **10**, 120–131.
- MacDonald 3rd AW, Becker TM, Carter CS** (2006). Functional magnetic resonance imaging study of cognitive control in the healthy relatives of schizophrenia patients. *Biological Psychiatry* **60**, 1241–1249.
- MacDonald 3rd AW, Thermenos HW, Barch DM, Seidman LJ** (2009). Imaging genetic liability to schizophrenia: systematic review of fMRI studies of patients' nonpsychotic relatives. *Schizophrenia Bulletin* **35**, 1142–1162.
- Manoach DS** (2003). Prefrontal cortex dysfunction during working memory performance in schizophrenia: reconciling discrepant findings. *Schizophrenia Research* **60**, 285–298.
- Meda SA, Bhattarai M, Morris NA, Astur RS, Calhoun VD, Mathalon DH, Kiehl KA, Pearlson GD** (2008). An fMRI study of working memory in first-degree unaffected relatives of schizophrenia patients. *Schizophrenia Research* **104**, 85–95.
- Minzenberg MJ, Laird AR, Thelen S, Carter CS, Glahn DC** (2009). Meta-analysis of 41 functional neuroimaging

- studies of executive function in schizophrenia. *Archives of General Psychiatry* **66**, 811–822.
- Poldrack RA, Fletcher PC, Henson RN, Worsley KJ, Brett M, Nichols TE** (2008). Guidelines for reporting an fMRI study. *NeuroImage* **40**, 409–414.
- Raemaekers M, Ramsey NF, Vink M, van den Heuvel MP, Kahn RS** (2006). Brain activation during antisaccades in unaffected relatives of schizophrenic patients. *Biological Psychiatry* **59**, 530–535.
- Ragland JD, Laird AR, Ranganath C, Blumenfeld RS, Gonzales SM, Glahn DC** (2009). Prefrontal activation deficits during episodic memory in schizophrenia. *American Journal of Psychiatry* **166**, 863–874.
- Seidman LJ, Thermenos HW, Koch JK, Ward M, Breiter H, Goldstein JM, Goodman JM, Faraone SV, Tsuang MT** (2007). Auditory verbal working memory load and thalamic activation in nonpsychotic relatives of persons with schizophrenia: an fMRI replication. *Neuropsychology* **21**, 599–610.
- Seidman LJ, Thermenos HW, Poldrack RA, Peace NK, Koch JK, Faraone SV, Tsuang MT** (2006). Altered brain activation in dorsolateral prefrontal cortex in adolescents and young adults at genetic risk for schizophrenia: an fMRI study of working memory. *Schizophrenia Research* **85**, 58–72.
- Sepede G, Ferretti A, Perrucci MG, Gambi F, Di Donato F, Nuccetelli F, Del Gratta C, Tartaro A, Salerno RM, Ferro FM, Romani GL** (2010). Altered brain response without behavioral attention deficits in healthy siblings of schizophrenic patients: an event-related fMRI study. *NeuroImage* **49**, 1080–1090.
- Snitz BE, Macdonald 3rd AW, Carter CS** (2006). Cognitive deficits in unaffected first-degree relatives of schizophrenia patients: a meta-analytic review of putative endophenotypes. *Schizophrenia Bulletin* **32**, 179–194.
- Spaniel F, Tintera J, Hajek T, Horacek J, Dezortova M, Hajek M, Dockery C, Kozeny J, Hoschl C** (2007). Language lateralization in monozygotic twins discordant and concordant for schizophrenia. A functional MRI pilot study. *European Psychiatry* **22**, 319–322.
- Tan HY, Callicott JH, Weinberger DR** (2009). Prefrontal cognitive systems in schizophrenia: towards human genetic brain mechanisms. *Cognitive Neuropsychiatry* **14**, 277–298.
- Thermenos HW, Seidman LJ, Breiter H, Goldstein JM, Goodman JM, Poldrack R, Faraone SV, Tsuang MT** (2004). Functional magnetic resonance imaging during auditory verbal working memory in nonpsychotic relatives of persons with schizophrenia: a pilot study. *Biological Psychiatry* **55**, 490–500.
- Vink M, Ramsey NF, Raemaekers M, Kahn RS** (2006). Striatal dysfunction in schizophrenia and unaffected relatives. *Biological Psychiatry* **60**, 32–39.
- Williams HJ, Owen MJ, O'Donovan MC** (2009). New findings from genetic association studies of schizophrenia. *Journal of Human Genetics* **54**, 9–14.
- Woodward ND, Waldie B, Rogers B, Tibbo P, Seres P, Purdon SE** (2009). Abnormal prefrontal cortical activity and connectivity during response selection in first episode psychosis, chronic schizophrenia, and unaffected siblings of individuals with schizophrenia. *Schizophrenia Research* **109**, 182–190.